

# HOME AND LAND

# Domaine homes



HOME SIZE: 266.4M<sup>2</sup>

LAND SIZE: 300M<sup>2</sup>

🛏 4 🚿 4 🏠 2.5 🚗 1

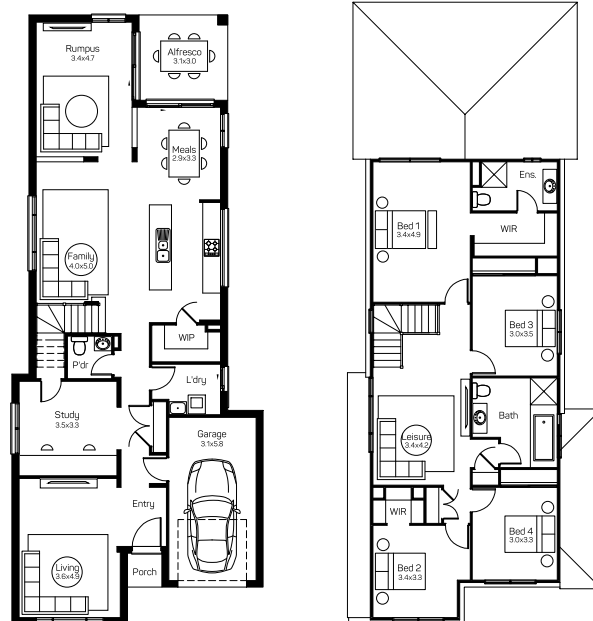
# \$1,179,600\*

## LUGANO 29 CANNES FACADE

Lot 39 Sixteenth Avenue, Austral,  
Crowland

### HOUSE AND LAND PACKAGE INCLUSIONS

- Lifetime Structural Guarantee
- Based of 2022 Basix
- Allowance for additional site costs
- 900mm oven, cooktop and rangehood
- 20mm stone kitchen benchtops
- Laminated overhead cupboards with bulkheads
- Soft close drawers and doors to kitchen and bathrooms
- Stainless steel dishwasher
- Roller blinds and flyscreens to opening windows
- Floor coverings
- Fully Ducted Air Conditioning
- And much, much more...



Domaine Homes | [contact@domainehomes.com.au](mailto:contact@domainehomes.com.au) | 13 64 69

\*Facade image may depict features not included in the package prices shown such as render, tiling, lighting, roof covering, timber decking and landscaping. Plans are subject to approval by the Principal Developer and Local Authorities. Domaine Homes NSW reserves the right to withdraw or alter this package at any time without notice. Allowance for site costs included. pricing is subject to change without notice. Domaine Homes NSW is not the owner of the land and is not responsible for final site dimensions or registration times. All information given at this time is believed to be correct.