

House & Land Package



Lot 229

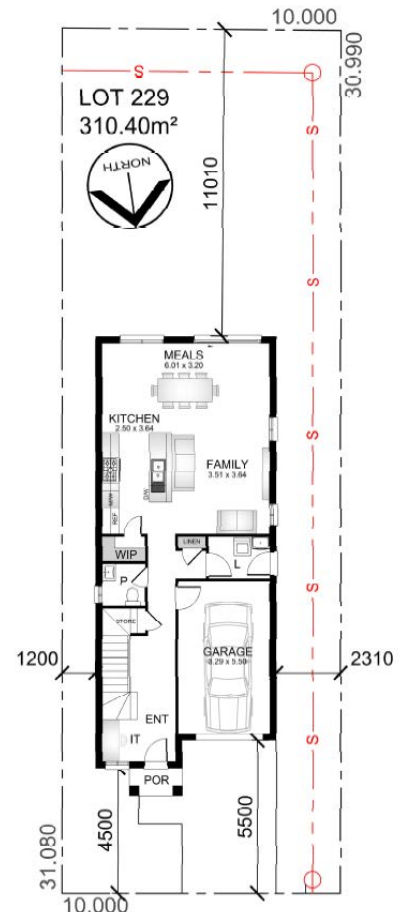
Proposed Rd, Austral

Package Price

\$981,000

Inclusions - Turn Key Package Inclusions

- This House and Land package comes with a long list of quality inclusions:
- Including our Practical Inclusions plus
- Insulation to walls & ceiling/Sarking to roof
- Enviro wrap to outside of the building frame
- H2 treated pine timber frame
- 20mm stone benchtop to kitchen
- 900mm stainless steel OMEGA appliances
- Ducted to kitchen range-hood
- Ceramic tiling to main floor areas, kitchen, porch & alfresco
- Carpet to all bedrooms
- Mirrored sliding doors robe & WIR (as shown)
- Ducted reverse cycle A/C
- Alarm system
- Coloured concrete driveway & path to porch
- Remote control panel lift garage door (2 handsets)
- Vertical blinds to all clear glazed windows
- Flyscreens to all opening windows
- Fixed price site costs & BASIX
- Gas package
- Basic pack set up works for NBN



Lot 229

4  2.5  1 

Land Size	310.40m ²
Ground Floor	77.02m ²
First Floor	96.44m ²
Total	150.03m ²

Garage	20.19m ²
Porch	3.11m ²



(02) 9606 8255 | www.practicalhomes.com.au

