

# House & Land Package



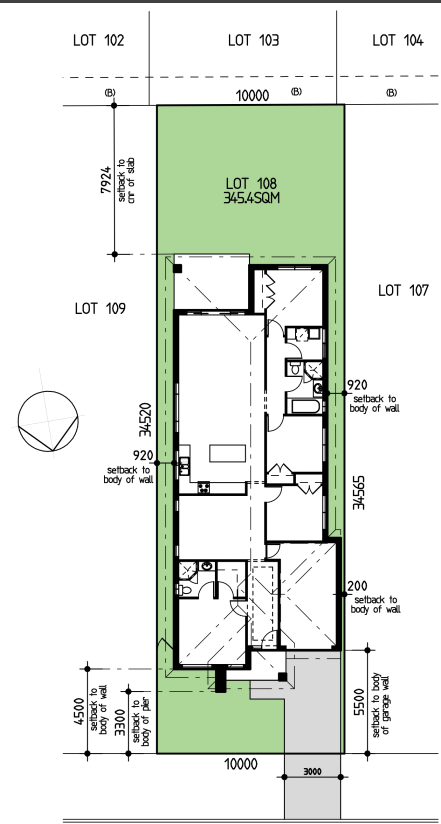
## Lot 108

Proposed Road  
Gurner Road  
Development

Package Price:  
**\$980,900**

### Inclusions

- Superior Dekton Stone to kitchen benchtop
- Upgraded 2.59m ceilings to ground floor
- Fully ducted premium Acton Air Conditioning
- Fisher Pikel Appliances inc: 900mm oven, rangehood and stovetop, built in dishwasher, built in microwave with trim kit
- Bulkhead to kitchen cabinetry, with cabinetry above fridge space
- Your choice of ceramic coated floor tiles or timber laminate to kitchen, dining, family room and entry
- Premium carpet range to balance of home
- Fully tiled alfresco and portico with roof over
- Downlights to ground floor main living areas
- Free standing bath, floating vanities and niches to shower recesses
- Fixed price 7 STAR BASIX fully included for maximum energy efficiency and comfort
- Paved driveway + path to entry
- NBN connection and Hills Home Hub, remote controlled garage door, alarm system
- Exterior light points, doorbell and intercom
- Fixed Site Costs and Connections To Services
- All developer and council requirements included
- Insect screens to openable windows



### PROPOSED ROAD SITE PLAN

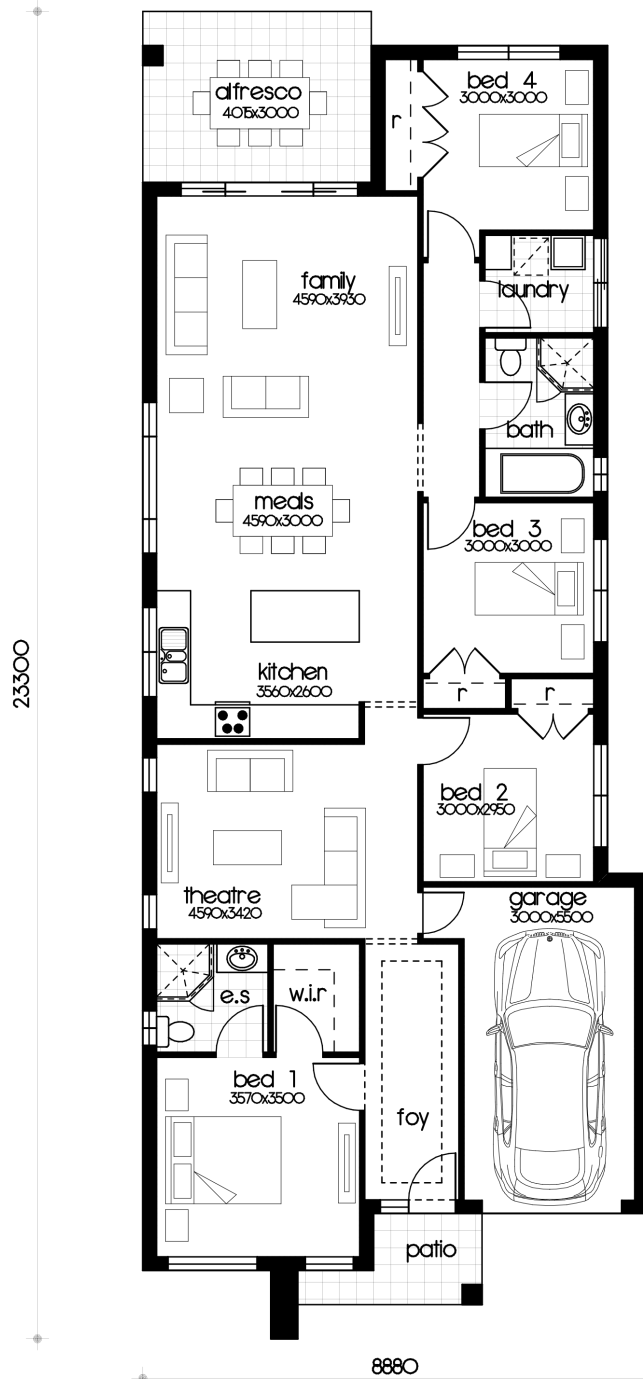
(B) EASEMENT TO DRAIN WATER 1.5' WIDE

# Lot 108



|              |                     |
|--------------|---------------------|
| Land Size    | 345.4m <sup>2</sup> |
| Ground Floor | 146.6m <sup>2</sup> |
| Porch        | 4.4m <sup>2</sup>   |

|          |                     |
|----------|---------------------|
| Alfresco | 12m <sup>2</sup>    |
| Garage   | 19.4m <sup>2</sup>  |
| Total    | 182.1m <sup>2</sup> |



GROUND FLOOR PLAN  
SAVANNAH 20 - VOGUE FACADE - RH



[ Rian Gampe 0445 424 885 ] | [rian@lilyhomes.com.au]

For Enquiries, contact Rian Gampe on 0455 424 885  
 Or visit us at one of our display home locations or online at [lilyhomes.com.au](http://lilyhomes.com.au)  
 \*Packages on Lot 108 have a 172m garage stepdown)\*All prices are GST inclusive. \*All access packages are subject to final survey, contours, developer and council approval. Preliminary house siting is subject to final levels and may require variation to suit.\*Lily Homes reserves the right to change pricing and inclusions without notification.