

House & Land Package



Extensive Quality Inclusions - 5 bed, 3 Bath

ON DISPLAY
Leppington Living, Moon St Leppington



Lot 107

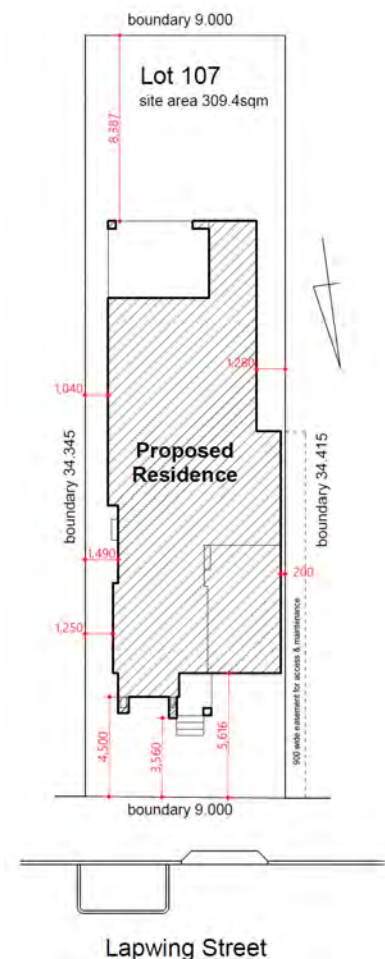
Lapwing St Austral
(45 - 65 Gurner Rd Sub Division)

Package Price

\$1,129,000

Inclusions

- Casaview Opulence Package - upgrades plus
- Actron fully ducted air conditioning
- 2700mm ceilings to GFL.
- Ceramic floor tiles to living areas.
- 1200mm high wall tiling to ensuite x1 & main bath x 1.
- Carpet to remainder of house / double powers points throughout
- "Color On" concrete driveway (up to 30m2).
- Vertical blinds to all windows (exc. wet areas/garage)
- 5 sensor alarm package / Corinthian Panel carve internal doors.
- Flyscreens to all windows / Auto garage door opener.
- Heavy Duty sarking to roof.
- National Broadband Network (NBN) Setup works – basic
- Site fencing / internal external stairs as required.
- Standard BASIX requirements / Gas pack inc. connection.
- Site costs – incl all piling to slab, geo tech site classification testing, landscape plan, all dirt removal & the following if required only by local authorities - Drop edge beams, rock excavation, H1 slab upgrade / salinity treatment to slab /sewer peg out and or Bal12.5 Bushfire construction.
- Extensive Casaview Homes standard inclusions.
- Incls upgrading dwelling to 7-Star minimum requirements -subject to formal ABSA certification

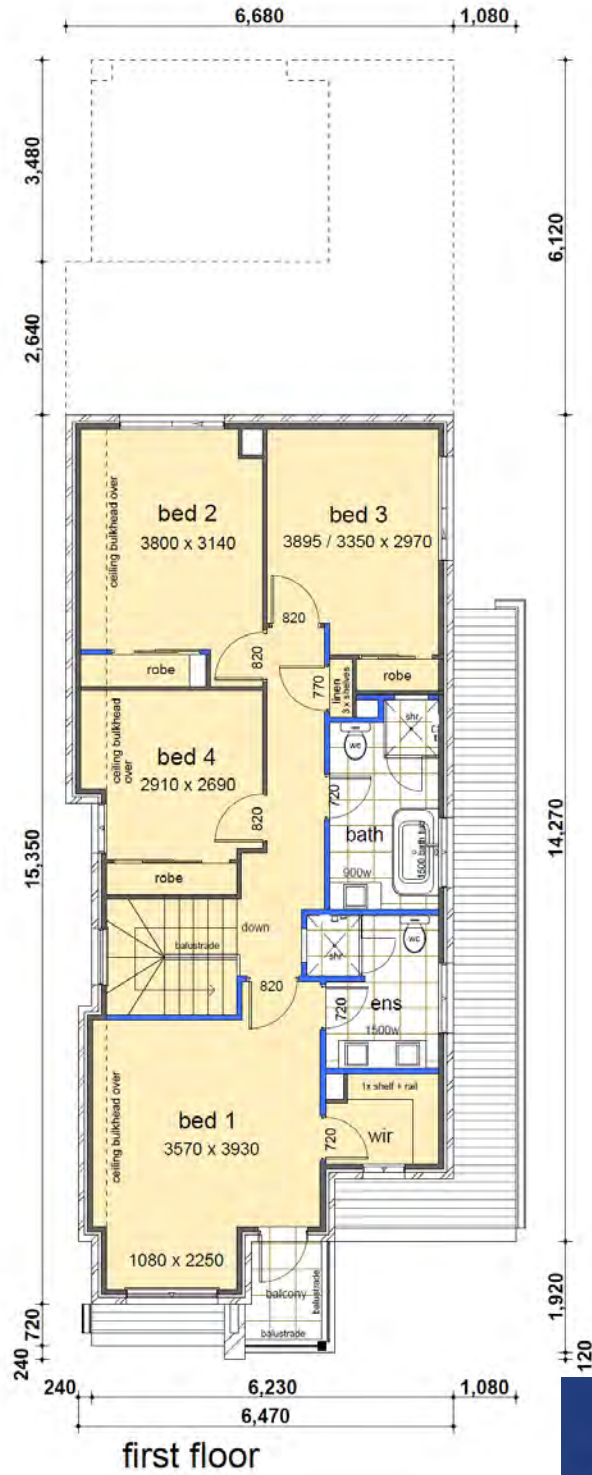
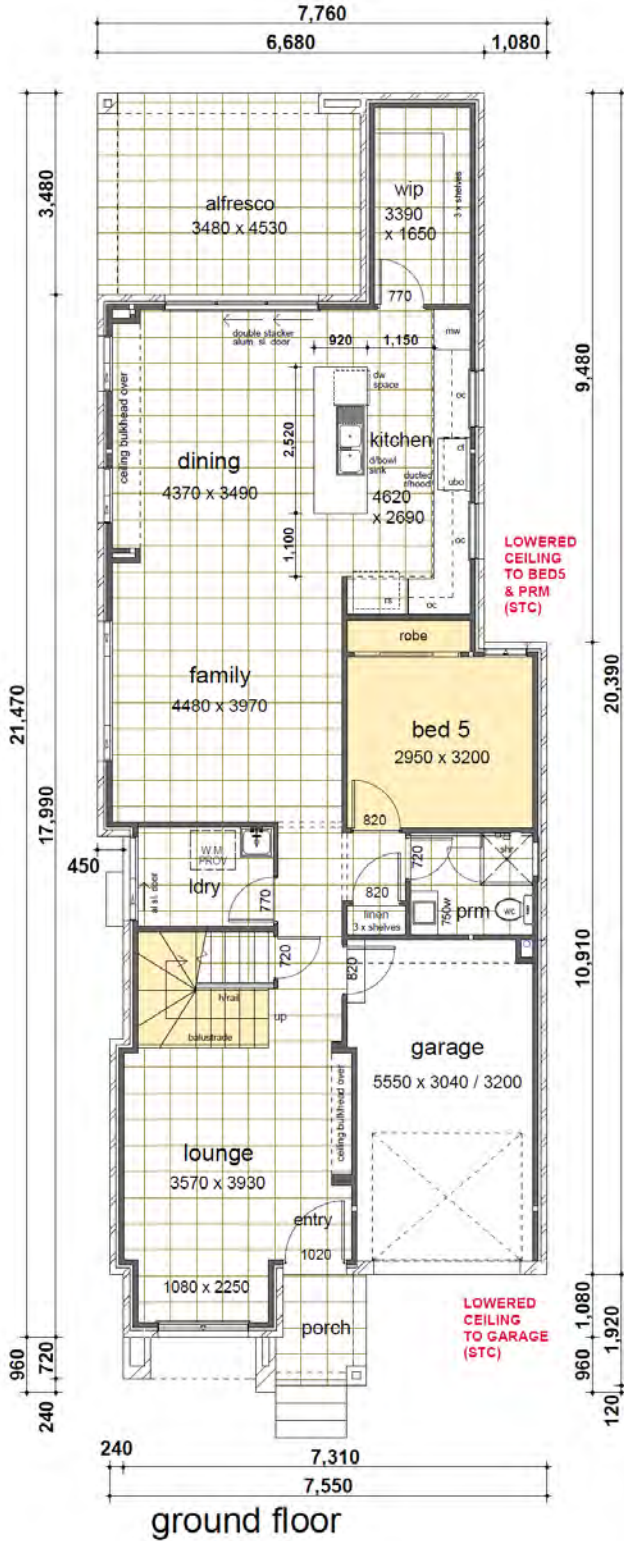


Lot 107



Land Size 309.40m²

Ground Floor	113.83
First Floor	94.00
Garage	19.27
Porch	2.87
Alfresco	15.76
Covered Area	1.64
Balcony	2.87
Total	250.24m²



Contact Pandit 0429 138 801 or Jim 0438 162 497 | www.casaview.com.au