

# House & Land Package

Extensive Quality Inclusions

5 Bedrooms, 3 Showers



## Lot 502

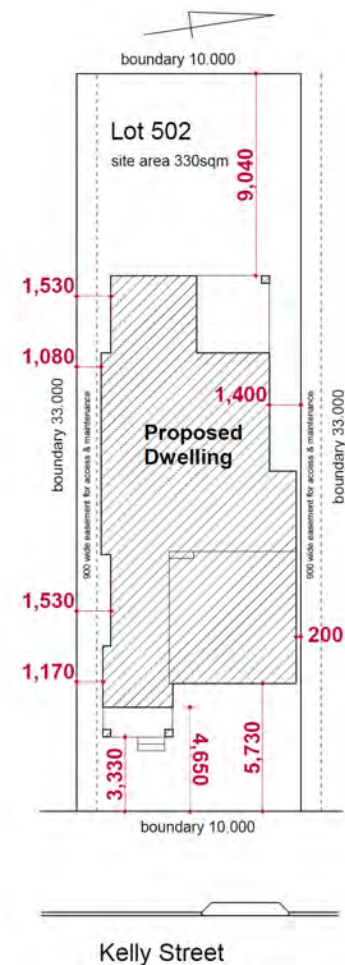
Kelly St Austral  
(13-19 Kelly St Sub Division)

Package Price

\$1,179,000

### Inclusions

- Casaview Opulence Package - upgrades plus
- Actron fully ducted air conditioning
- 2700mm ceilings to GFL.
- Ceramic floor tiles to living areas.
- 1200mm high wall tiling to ensuite x1 & main bath x 1.
- Carpet to remainder of house / double powers points throughout
- "Color On" concrete driveway (up to 50m2).
- Vertical blinds to all windows (exc. wet areas/garage)
- 5 sensor alarm package / Corinthian Panel carve internal doors.
- Flyscreens to all windows / Auto garage door opener.
- Heavy Duty sarking to roof.
- National Broadband Network (NBN) Setup works – basic
- Site fencing / internal external stairs as required.
- Standard BASIX requirements / Gas pack inc. connection.
- Site costs – incl all piling to slab, geo tech site classification testing, landscape plan, all dirt removal & the following if required only by local authorities - Drop edge beams, rock excavation, H1 slab upgrade / salinity treatment to slab /sewer peg out and or Bal12.5 Bushfire construction.
- Extensive Casaview Homes standard inclusions.
- Incls upgrading dwelling to 7-Star minimum requirements -subject to formal ABSA certification



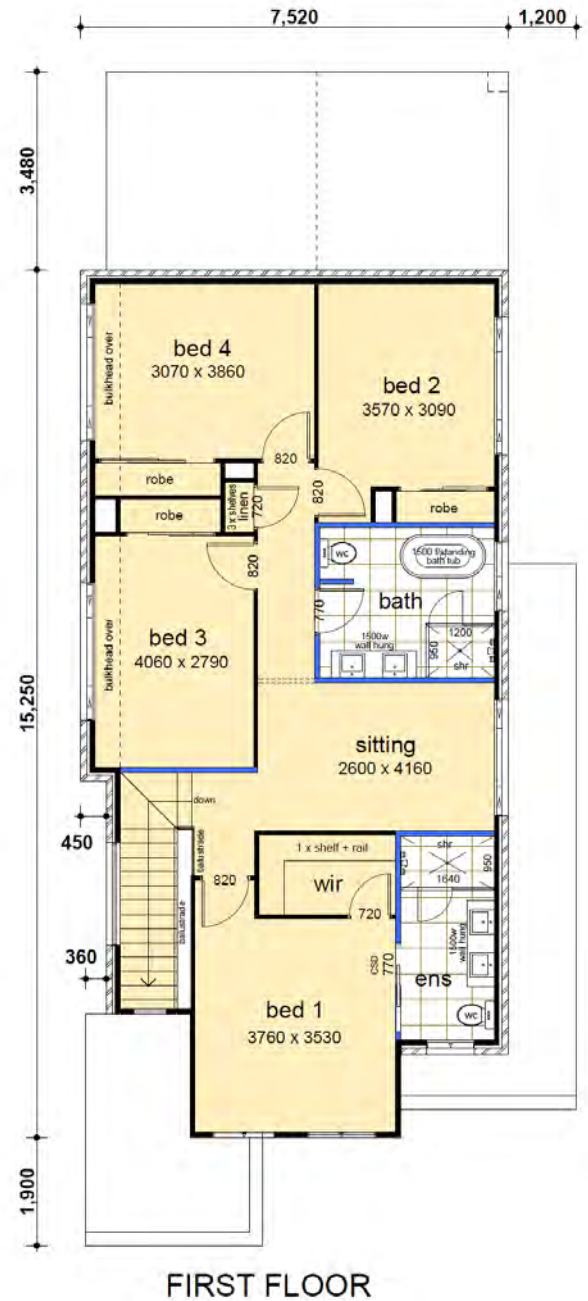
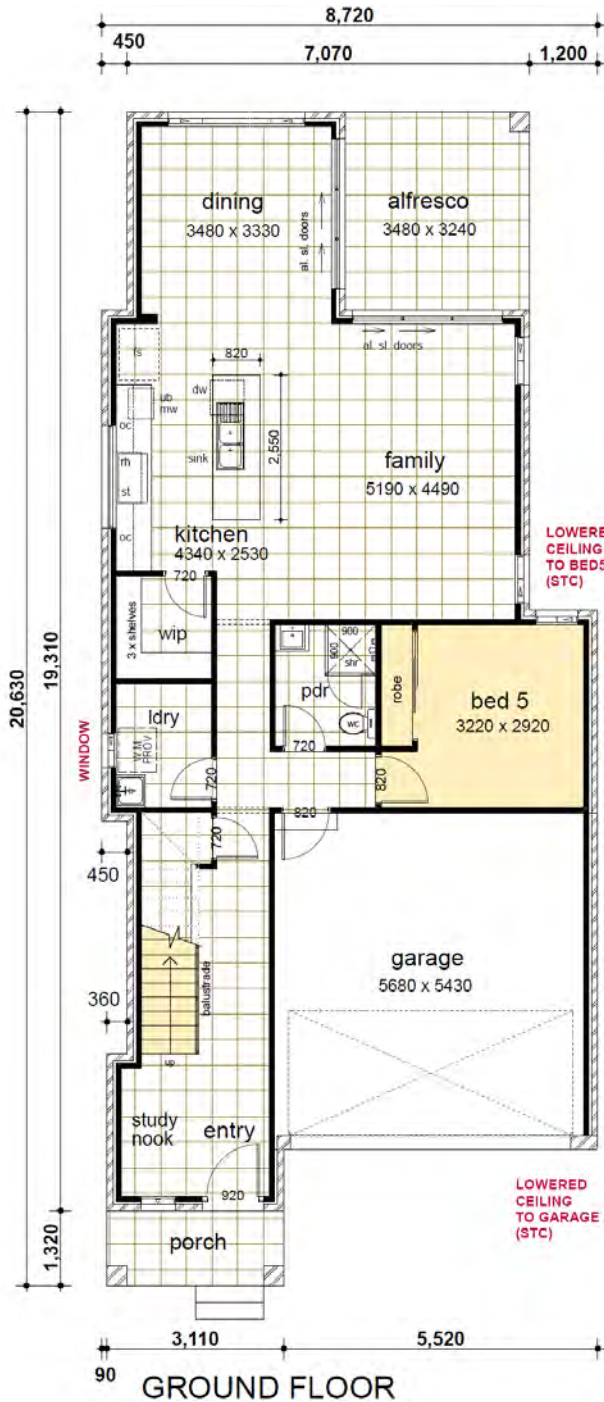
# Lot 502



Land Size **330.00m<sup>2</sup>**

|              |        |
|--------------|--------|
| Ground Floor | 103.41 |
| First Floor  | 105.91 |
| Garage       | 33.57  |
| Alfresco     | 11.28  |
| Porch        | 4.11   |

Total **258.28m<sup>2</sup>**



Contact Pandit 0429 138 801 or Jim 0438 162 497 | [www.casaview.com.au](http://www.casaview.com.au)