

House & Land Package

Domaine homes



Lot 316

Horologium Rd, Austral

Package Price
\$985,225

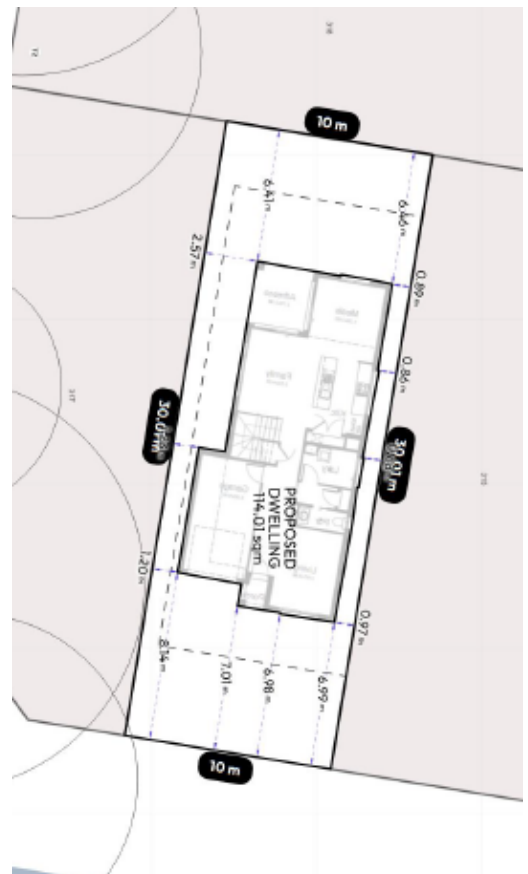
HOME SIZE: 194.3M²

LAND SIZE: 300M²

4 2 2.5 1

Inclusions

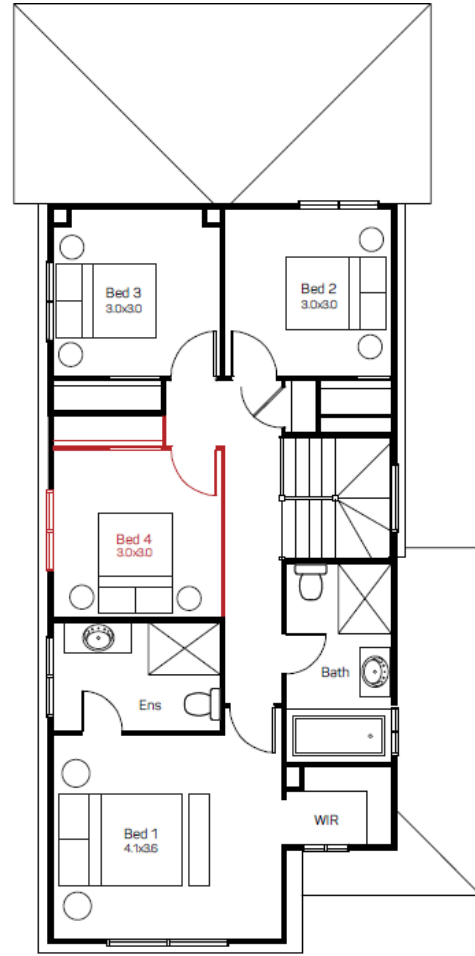
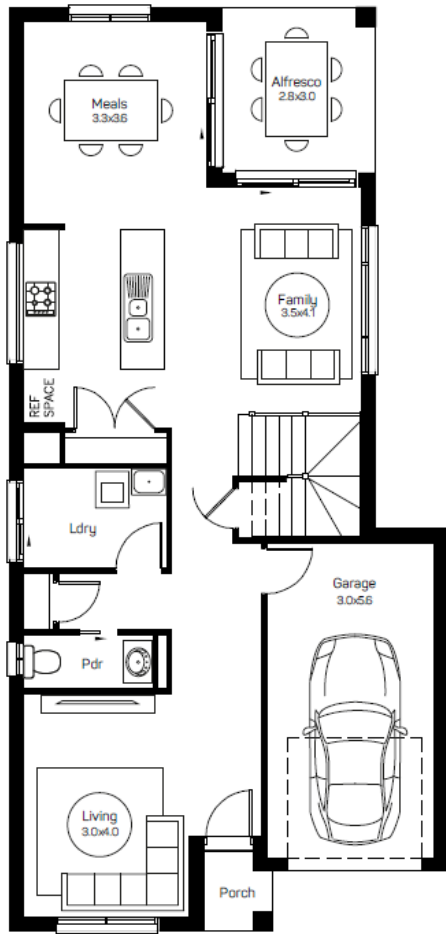
- Lifetime Structural Guarantee
- Allowance for additional site costs
- 900mm oven, cooktop and rangehood
- 20mm stone kitchen benchtops
- Laminated overhead cupboards with bulkheads
- Soft close drawers and doors to kitchen and bathrooms
- Stainless steel dishwasher
- Roller blinds and flyscreens to opening windows
- Floor coverings
- Fully Ducted Air Conditioning
- And much, much more...



Lot

4  2.5  1 

Land Size	300sqm	Garage	19.43sqm
Ground Floor	84.76sqm	Alfresco	8.17sqm
First Floor	80.25sqm	Porch	1.66sqm
Total	194.3sqm		



0438 016 360 - Mark Young myoung@domainehomes.com.au

Domaine homes

DISCLAIMER: *Facade image may depict features not included in the package prices shown such as render, tiling, lighting, roof covering, timber decking and landscaping. Plans are subject to approval by the Principal Developer and Local Authorities. Domaine Homes NSW reserves the right to withdraw or alter this package at any time without notice. Allowance for site costs included, pricing is subject to change without notice. Domaine Homes NSW is not the owner of the land and is not responsible for final site dimensions or registration times. All information given at this time is believed to be correct.